



Lowering suspension systems

WAV WITH LOWERING SUSPENSION

PremiumPartner

von Volkswagen Nutzfahrzeuge

Volkswagen T5 / T6



www.amf-bruns.de

ACCESSIBLE VEHICLES WITH LOWERING SUSPENSION

Volkswagen T5 / T6



The lowered vehicle can be accessed by the wheelchair.



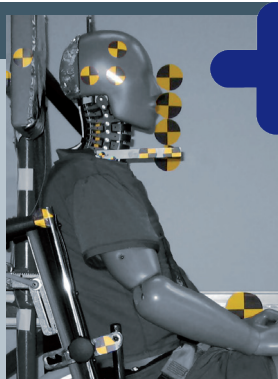
Vehicle with folded ramp. Rear view is maintained.



Vehicle ready for departure (standard height).



Lowered vehicle.



**Tomorrow's
safety today!**

FUTURESAFE® Head & backrest

FutureSafe is a safe, space-saving and comfortable patented safety system, which is flexibly customisable and comes with an integrated shoulder belt for the wheelchair occupant.

PROTEKTOR® Wheelchair & occupant restraint system

The AMF-Bruns Protektor restraint system meets DIN 75078 part II, ISO 10542.

PROSAFE® „Kraftknotenadapter“ Integrated lap belt

With the „Kraftknotenadapter“ system the wheelchair is quickly and precisely fitted to the vehicle's floor. It comes with a pelvis belt for the wheelchair occupant.

TECHNICAL DATA

» Lowering system	Strong, low-noise power pack, 12 V	» Wheelchair restraint	4-point wheelchair restraint system, crash tested
» Ramp	Aluminium with anti-slip surface, foldable in the centre, gas strut supported, profile: Euro Ramp	» Safety belt for the wheelchair occupant	Pelvis belt and automatic shoulder belt
» Lowering operation	Via rocker switch in the rear		
» Lifting operation	Automatically when rear door is being closed		

AMF-BRUNS PROVIDES THE MAXIMUM OF SAFETY

- » All conversions come with EMC testing according to EU regulations
- » Security valves ensure smooth lowering and lifting of the vehicle.
- » The AMF-Bruns 4-point restraint system meets DIN 75078, part II and ensures that the wheelchairs are safely fixed to the vehicle's floor.
- » AMF-Bruns automatic shoulder belt is in-vehicle tested according to DIN 75078 and EU regulation 2007/46.
- » All mounting parts 20 G pull-tested.



AMF-Bruns GmbH & Co. KG | Hauptstraße 101 | D-26689 Apen
Telefon +49 (0) 44 89 / 72 72 -33 / -50 / -38 | Fax +49 (0) 44 89 / 62 45
hubmatik@amf-bruns.de

www.amf-bruns.de



DIN EN ISO 9001
REG.-NR. 01 0105027